

Wednesday, August 8th, 2018

DOMESTIC MARKET RECAP

IHSG ditutup terkoreksi terbatas 0.16% ditopang oleh sektor pertambangan (+1.37%) pada perdagangan hari ini (7/8). Meskipun harga batubara mulai mengalami penurunan, kenaikan harga nikel menjadi katalis positif bagi sektor pertambangan. Kenaikan harga nikel menjadi stimulus bagi emiten pertambangan seperti NIKL (+1.25%) dan INCO (+4.03%). Selain itu, sektor aneka industri (-0.54%) menjadi *laggards* IHSG seiring dengan *outlook* negatif dari potensi pertumbuhan konsumsi masyarakat kedepan. Penurunan tingkat kepercayaan konsumen bulan Juli 2018 (124.8 vs 128.1 MoM) mengindikasikan potensi menurunnya konsumsi masyarakat kedepan.

Bursa regional mayoritas seperti *Nikkei* (+0.69%) dan *SSEC* (+2.74%) berhasil ditutup menguat, meskipun sentimen perang dagang masih membayangi. Sektor teknologi menjadi penopang bursa regional pada perdagangan hari ini (7/8).

6091.25

Daily -9.88
Change -0.16%
YTD -4.16%

*as of 7-8-2018

T. Volume (Shares)	9.09 B
T. Value (Rp)	7.86 T
F. Net Value (Rp)	106.54 B
2018 F. Net Val (Rp)	-47.56 T
Market Cap. (Rp)	6,866 T
2018 Highest	6693.47
2018 Lowest	5661.08

Source : BEI

Selective Shares

Source : IDX | Processed

as of 7-8-2018

	Last	% Ch.	% YTD	Recommendation	'18 Low	'18 High	PER	PBV	Entry	Target	Cut Loss
ADHI	1,690	1.56	-10.34	Trading Buy	1,535	1,730	20.53	1.01	1,710	1,810	1,570
BBNI	8,100	-1.27	-18.18	Trading Buy	6,800	8,250	10.25	1.51	8,175	8,450	7,775
WSKT	2,160	-0.96	-2.26	Trading Buy	1,770	2,210	4.82	1.20	2,180	2,240	2,090
LSIP	1,195	-1.24	-15.85	Wait and See	905	1,245	17.57	0.98	1,210	1,265	1,125
ERAA	2,900	-4.46	294.56	Trading Sell	1,720	3,200	11.26	2.36	2,990	3,180	2,670
CPIN	4,790	2.97	59.67	Trading Sell	3,300	4,890	31.45	5.00	4,840	5,140	4,420
EXCL	3,050	7.33	3.04	Trading Sell	1,710	3,080	527.68	1.51	3,070	3,350	2,690
BBCA	23,800	0.00	8.68	Sell on Strength	20,700	23,875	26.37	4.26	23,825	24,050	23,525
PTBA	4,780	4.44	94.31	Sell on Strength	3,170	4,840	12.30	3.99	4,810	5,150	4,370
SMGR	8,950	-0.56	-9.60	Sell on Strength	6,575	9,250	26.36	1.74	9,000	9,350	8,525

Compiled by

Valdy Kurniawan

Senior Equity Research Analyst

+62 21 2555 6138 Ext. 8304

at.research@phintracosekuritas.com

Rendy Wijaya

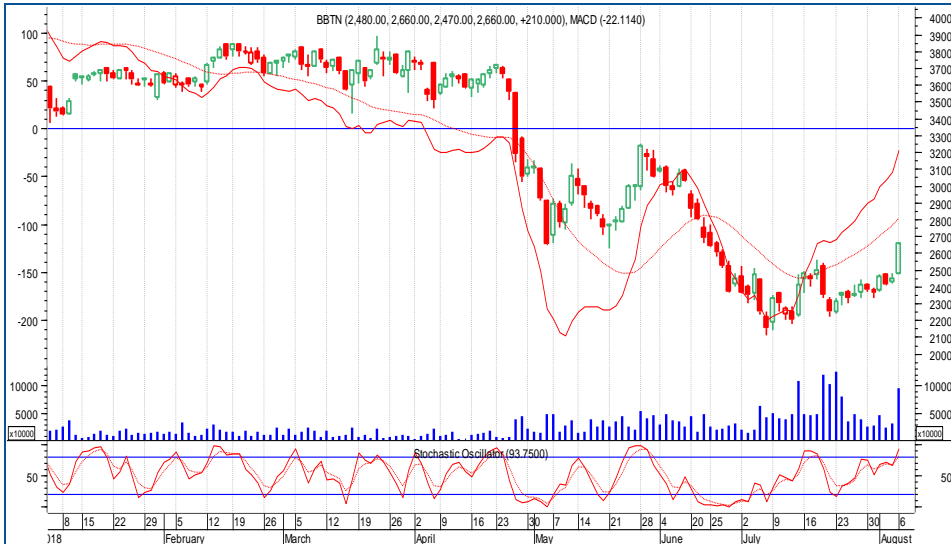
Equity Research Analyst

+62 21 2555 6138 Ext. 8304

at.research@phintracosekuritas.com

Technical Reviews

Bank Tabungan Negara (Persero). Tbk | BBTN



TECHNICAL Reviews

Didukung oleh kenaikan volume perdagangan yang signifikan, *breakout resistance* BBTN di level Rp2,600 menjadi indikasi awal *minor bullish reversal*. Selama bertahan diatas level Rp2,600, investor dapat melakukan *trading buy* dengan target jangka pendek berada pada level Rp2,800.

2,660

Daily Change **0.00%**

Trading Buy

2018 Highest	Rp	3,850
2018 Lowest	Rp	2,110
Critical Area	Rp	3,000
Entry Level	Rp	2,650
Target Price	Rp	2,800
Cut Loss	Rp	2,400
MACD		-22.11
Stochastic		93.75

Source : IDX | Processed

Jasa Marga (Persero). Tbk | JSMR



TECHNICAL Reviews

Breakout critical level pada Rp4,600 yang didukung oleh kenaikan volume perdagangan menjadi sinyal awal *minor bullish reversal*. Selama bertahan diatas Rp4,600, JSMR berpotensi melanjutkan *bullish trend*. Sejalan dengan itu, investor dapat melakukan *trading buy* dengan target harga berada pada Rp5,300.

4,980

Daily Change **0.40%**

Trading Buy

2018 Highest	Rp	6,600
2018 Lowest	Rp	3,920
Critical Area	Rp	4,600
Entry Level	Rp	4,900
Target Price	Rp	5,300
Cut Loss	Rp	4,500
MACD		95.75
Stochastic		78.98

Source : IDX | Processed



ECONOMIC Calendar

Tabel 1. Corporate Action Calendar

	Type of Corporate Action	Date	Nominal (Rp)	Ratio
TAMU	RUPSLB	8-Aug-18	-	-
TDPM	RUPSLB	8-Aug-18	-	-
TAMU	RUPST	8-Aug-18	-	-
TDPM	RUPST	8-Aug-18	-	-
BHIT	RUPST	9-Aug-18	-	-
MYOR	RUPST	10-Aug-18	-	-
MYRX	RUPST	10-Aug-18	-	-
TOWR	RUPSLB	10-Aug-18	-	-
PALM	RUPSLB	13-Aug-18	-	-
IBFN	RUPSLB	15-Aug-18	-	-
JASS	RUPSLB	16-Aug-18	-	-

Source : KSEI

Tabel 2. Global Economic Released

	Date	Forecast	Previous
Japan Current Account (Jun)	8-Aug-18	1.196T	1.938T
China Trade Balance (USD) (Jul)	8-Aug-18	38.75B	41.47B
China Import (YoY) (Jul)	8-Aug-18	17.0%	14.1%
Indonesia Retail Sales (Jun) (YoY)	8-Aug-18	-	8.3%
US Crude Inventories	8-Aug-18	-2.794M	3.803M
Japan Core Machine Order (MoM) (Jun)	9-Aug-18	-0.8%	-3.7%
China CPI (YoY) (Jul)	9-Aug-18	1.9%	1.9%

Source : dailyfx.com

CONTACT US

PHINTRACO SEKURITAS

The EAST Tower 16th Floor
Jl. Dr. Ide Anak Agung Gde Agung Kav. E3.2 No. 1
Mega Kuningan, Jakarta 12950

CALL CENTER : + 62 21 2555 6111

P. +62 21 2555 6138

F. +62 21 2555 6139

ACEH

Bursa Efek Indonesia Kantor Perwakilan Aceh
Jl. Tengku Imeum Leung Bata No. 84
Blang Cut, Lueng Bata, Kota Banda Aceh, Aceh 23127
P. 0651 351 03

RIAU

Bursa Efek Indonesia Kantor Perwakilan Riau
Jl. Jend. Sudirman No.73, Pekanbaru – Riau
P. 0761 787 0982

SEMARANG

Ruko Saka Square A-09
Jl. Majapahit 71-73
Semarang 50167, Jawa Tengah
P. 024 7692 8573

YOGYAKARTA

Jl. Laksda Adisucipto No. 177
Yogyakarta 55281, DIY
P. 0274 446 9385

MATARAM

Bursa Efek Indonesia Kantor Perwakilan Mataram
Jl. Pejanggik 47 C
Mataram, Nusa Tenggara Barat

BALIKPAPAN

Bursa Efek Indonesia Kantor Perwakilan Balikpapan
Jl. Jendral Sudirman No. 33-B
Balikpapan, Kalimantan Timur

JAYAPURA

Bursa Efek Indonesia Kantor Perwakilan Jayapura
Ruko Polimak 3 Halte
Jl. Adipura, Polimak
Jayapura, Papua

MEDAN

Uniplaza Building West Tower 1st Floor
Jl. Letjend M.T. Haryono No. A-1
Medan 20231, Sumatera Utara
P. 061 453 0223

BANDUNG

Jl. Abdul Rivai No. 3B
Bandung 40171 Jawa Barat
P. 022 4231 883

SOLO

Jl. Monginsidi No. 105
Surakarta 57133, Jawa Tengah
(Depan Stasiun Solo Balapan)
P. 0271 293 1850

SURABAYA

Ruko Icon 21 Blok R-05
Jl. Dr. Ir. H. Soekarno (MERR)
Surabaya 60111, Jawa Timur
P. 031 9900 5231 | 031 9900 5232

PALANGKA RAYA

Bursa Efek Indonesia Kantor Perwakilan Palangka Raya
Jl. RTA. Milono Km. 1.5 Ruko 1
Palangka Raya, Kalimantan Tengah
P. 0536 4215135

MANADO

Bursa Efek Indonesia Kantor Perwakilan Manado
Kompleks Ruko Mega Mas Style, Blok 1C, No. 9
Jl. Piere Tendean Boulevard
Manado, Sulawesi Utara
P. 0431 882 0387

DISCLAIMER

This report is provided for information purposes only. It is not a complete analysis of every material fact respecting any company, industry, security or investment. Opinions expressed are subject to change without notice. Statements of fact have been obtained from sources considered reliable but no representation is made by Phintraco Sekuritas or any of its affiliates as to their completeness or accuracy. Phintraco Sekuritas in this report, which position may change from time to time, buy or sell such securities or investments. Phintraco Sekuritas or its affiliates may from time to time perform investment banking or other services for, or solicit investment banking or other business from, any company mentioned in this report. An employee of Phintraco Sekuritas or its affiliates may be director of a company mentioned in this report. Neither this report, nor any opinion expressed herein, should be construed as an offer to sell or a solicitation of an offer to acquire any securities or other investments mentioned herein. The company accepts no liability whatsoever for any direct or consequential loss arising from the use of this report or its contents. This report may not be reproduced, distributed or published by any recipient for any purpose.