

Thursday, September 13th, 2018

DOMESTIC MARKET RECAP

Sektor keuangan (-1.99%) menjadi laggards IHSG yang ditutup terkoreksi 0.57% pada perdagangan hari ini (12/9). Sektor keuangan tertekan oleh sentimen negatif dari kenaikan suku bunga penjaminan oleh LPS sebesar 25 hingga 50 *bps*. Kenaikan suku bunga penjaminan ini diperkirakan akan menjadi sentimen negatif bagi kinerja emiten perbankan kedepan. Sejalan dengan sentimen ini, investor asing mencatatkan *nett sell* sebesar Rp684.49 miliar. Aksi jual ini terjadi pada saham-saham perbankan *big caps* seperti BBKA (-3.43%), BBRI (-2.02%), BBNI (-2.06%), dan BMRI (-3.04%). Koreksi pada sektor keuangan diperkirakan dapat berlanjut pada perdagangan Kamsi (13/9).

Mayoritas bursa regional seperti *Nikkei* (-0.27%) dan *SSEC* (-0.33%) ditutup melemah terbatas. Koreksi ini dibayangi oleh meningkatnya uncertainty risk kondisi global disebabkan oleh isu perang dagang.

5798.15

Daily -32.97
Change -0.57%
YTD -8.77%

*as of 12-9-2018

T. Volume (Shares)	8.96 B
T. Value (Rp)	7.16 T
F. Net Value (Rp)	-684.89 B
2018 F. Net Val (Rp)	-53.88 T
Market Cap. (Rp)	6,520 T
2018 Highest	6693.47
2018 Lowest	5661.08

Source : BEI

Selective Shares

Source : IDX | Processed

as of 12-9-2018

	Last	% Ch.	% YTD	Recommendation	'18 Low	'18 High	PER	PBV	Entry	Target	Cut Loss
ACES	1,295	3.19	12.12	Buy on Weakness	1,125	1,500	26.58	5.97	1,300	1,360	1,210
GGRM	74,000	0.82	-11.69	Trading Buy	66,500	77,425	18.81	3.23	74,400	76,475	71,525
ADRO	1,760	1.44	-5.38	Trading Buy	1,575	2,030	13.74	0.98	1,770	1,810	1,710
LPPF	6,550	-2.60	-34.50	Trading Buy	5,525	7,600	19.36	7.42	6,775	7,300	5,950
UNTR	32,125	-1.76	-9.25	Wait and See	31,150	37,450	11.84	2.36	32,675	34,000	30,625
HMSP	3,820	0.53	-19.24	Wait and See	3,310	3,950	36.63	11.96	3,850	3,920	3,740
SCMA	1,795	-4.27	-27.62	Wait and See	1,795	2,180	18.27	5.51	1,840	1,945	1,675
BBTN	2,530	-1.17	-29.13	Sell on Strength	2,110	2,920	9.69	1.22	2,570	2,670	2,400
ICBP	8,875	-0.28	-0.28	Sell on Strength	7,900	9,050	21.33	4.79	8,900	9,200	8,525
JPFA	2,110	3.43	62.31	Sell on Strength	1,525	2,370	14.27	2.72	2,130	2,250	1,950

Compiled by

Valdy Kurniawan

Senior Equity Research Analyst

+62 21 2555 6138 Ext. 8304

af.research@phintracosekuritas.com

Rendy Wijaya

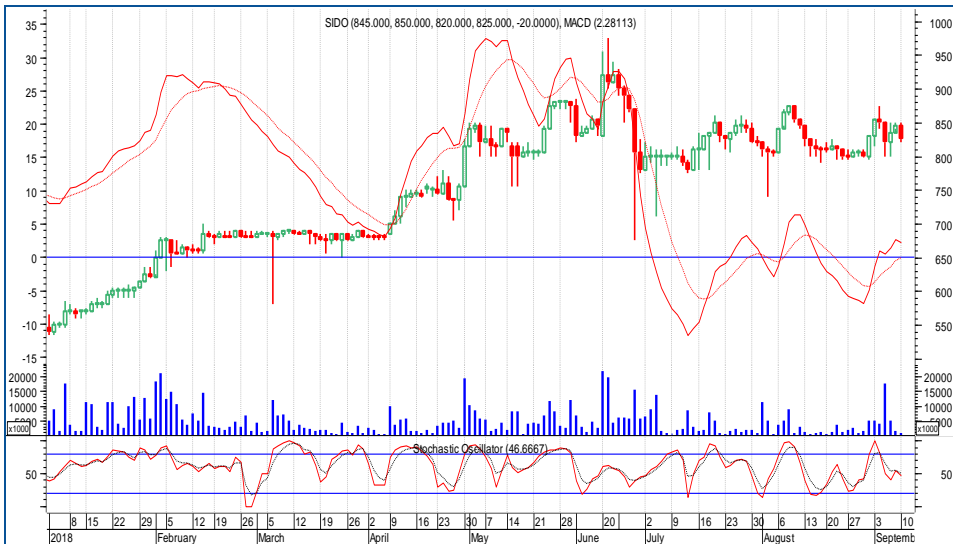
Equity Research Analyst

+62 21 2555 6138 Ext. 8304

af.research@phintracosekuritas.com

Technical Reviews

Industri Jamu dan Farmasi Sido Muncul. Tbk | **SIDO**



TECHNICAL Reviews

Trading buy dalam rentang Rp800-Rp850. Akumulasi beldapat dilakukan , jika SIDO membentuk *resistance breakout* pada Rp875. Hal ini merupakan sinyal *minor bullish reversal*. Namun demikian, waspadai sinyal *bearish continuation* yang ditunjukkan oleh *break low* Rp780. Oleh sebab itu, hati-hati ketika SIDO menguji *support area* di Rp780-Rp800

850

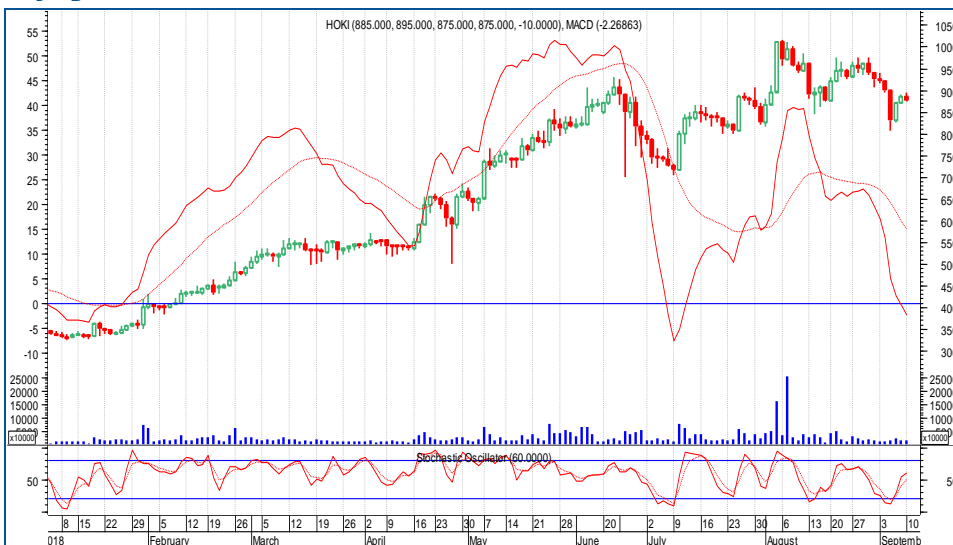
Daily Change **25**
3.03%

Trading Buy

2018 Highest	Rp	975
2018 Lowest	Rp	535
Critical Area	Rp	800
Entry Level	Rp	850
Target Price	Rp	930
Cut Loss	Rp	780
MACD		2.28
Stochastic		46.67

Source : IDX | Processed

Buyung Poetra Sembada. Tbk | **HOKI**



TECHNICAL Reviews

Akumulasi beli dapat dilakukan , jika HOKI *break level* psikologis Rp900 (yang juga merupakan *pivot level*). *Breakout level* ini mengindikasikan berlanjutnya *technical rebound* hingga kisaran Rp950-Rp1,000. Level Rp1,000 merupakan *resistance* kuat sebelum HOKI kembali ke *bullish trend*.

895

Daily Change **20**
2.29%

Trading Buy

2018 Highest	Rp	1,015
2018 Lowest	Rp	322
Critical Area	Rp	900
Entry Level	Rp	900
Target Price	Rp	1,050
Cut Loss	Rp	800
MACD		-2.27
Stochastic		60.00

Source : IDX | Processed



ECONOMIC Calendar

Tabel 1. Corporate Action Calendar

	Type of Corporate Action	Date	Nominal (Rp)	Ratio
HRTA	RUPSLB	14-Sep-18	-	-
HEXA	RUPSLB	18-Sep-18	-	-
CPRO	RUPSLB	19-Sep-18	-	-
CPRO	RUPST	19-Sep-18	-	-
CNTB	RUPST	19-Sep-18	-	-
CNTX	RUPST	19-Sep-18	-	-
CSAP	RUPSLB	20-Sep-18	-	-
BABP	RUPSLB	20-Sep-18	-	-
PSSI	RUPSLB	20-Sep-18	-	-
ITMA	RUPST	20-Sep-18	-	-
MDKA	RUPSLB	21-Sep-18	-	-

Source : KSEI

Tabel 2. Global Economic Released

	Date	Forecast	Previous
UK BOE Interest Rate Decision (Sep)	13-Sep-18	0.75%	0.75%
US Core CPI (YoY) (Aug)	13-Sep-18	2.4%	2.4%
US CPI (YoY) (Aug)	13-Sep-18	2.8%	2.9%
China New Loans (Aug)	13-Sep-18	1,370 B	1,450 B
China Cumulative Loan Growth (Aug) (YoY)	13-Sep-18	13.2%	13.2%
Euro ECB Interest Rate Decision (Sep)	13-Sep-18	0.0%	0.0%
China Fixed Asset Investment (YoY) (Aug)	14-Sep-18	5.5%	5.5%

Source : dailyfx.com

CONTACT US

PHINTRACO SEKURITAS

The EAST Tower 16th Floor
Jl. Dr. Ide Anak Agung Gde Agung Kav. E3.2 No. 1
Mega Kuningan, Jakarta 12950

CALL CENTER : +62 21 2555 6111

P. +62 21 2555 6138

F. +62 21 2555 6139

www.phintracosekuritas.com | www.profits.co.id | www.taspro.co.id

ACEH

Bursa Efek Indonesia Kantor Perwakilan Aceh
Jl. Tengku Imeum Leung Bata No. 84
Blang Cut, Lueng Bata, Kota Banda Aceh, Aceh 23127
P. 0651 351 03

RIAU

Bursa Efek Indonesia Kantor Perwakilan Riau
Jl. Jend. Sudirman No.73, Pekanbaru – Riau
P. 0761 787 0982

SEMARANG

Ruko Saka Square A-09
Jl. Majapahit 71-73
Semarang 50167, Jawa Tengah
P. 024 7692 8573

YOGYAKARTA

Jl. Laksda Adisucipto No. 177
Yogyakarta 55281, DIY
P. 0274 446 9385

MATARAM

Bursa Efek Indonesia Kantor Perwakilan Mataram
Jl. Pejanggik 47 C
Mataram, Nusa Tenggara Barat

BALIKPAPAN

Bursa Efek Indonesia Kantor Perwakilan Balikpapan
Jl. Jendral Sudirman No. 33-B
Balikpapan, Kalimantan Timur

JAYAPURA

Bursa Efek Indonesia Kantor Perwakilan Jayapura
Ruko Polimak 3 Halte
Jl. Adipura, Polimak
Jayapura, Papua

MEDAN

Uniplaza Building West Tower 1st Floor
Jl. Letjend M.T. Haryono No. A-1
Medan 20231, Sumatera Utara
P. 061 453 0223

BANDUNG

Jl. Abdul Rivai No. 3B
Bandung 40171 Jawa Barat
P. 022 4231 883

SOLO

Jl. Monginsidi No. 105
Surakarta 57133, Jawa Tengah
(Depan Stasiun Solo Balapan)
P. 0271 293 1850

SURABAYA

Ruko Icon 21 Blok R-05
Jl. Dr. Ir. H. Soekarno (MERR)
Surabaya 60111, Jawa Timur
P. 031 9900 5231 | 031 9900 5232

PALANGKA RAYA

Bursa Efek Indonesia Kantor Perwakilan Palangka Raya
Jl. RTA. Milono Km. 1.5 Ruko 1
Palangka Raya, Kalimantan Tengah
P. 0536 4215135

MANADO

Bursa Efek Indonesia Kantor Perwakilan Manado
Kompleks Ruko Mega Mas Style, Blok 1C, No. 9
Jl. Piere Tendean Boulevard
Manado, Sulawesi Utara
P. 0431 882 0387

DISCLAIMER

This report is provided for information purposes only. It is not a complete analysis of every material fact respecting any company, industry, security or investment. Opinions expressed are subject to change without notice. Statements of fact have been obtained from sources considered reliable but no representation is made by Phintraco Sekuritas or any of its affiliates as to their completeness or accuracy. Phintraco Sekuritas in this report, which position may change from time to time, buy or sell such securities or investments. Phintraco Sekuritas or its affiliates may from time to time perform investment banking or other services for, or solicit investment banking or other business from, any company mentioned in this report. An employee of Phintraco Sekuritas or its affiliates may be director of a company mentioned in this report. Neither this report, nor any opinion expressed herein, should be construed as an offer to sell or a solicitation of an offer to acquire any securities or other investments mentioned herein. The company accepts no liability whatsoever for any direct or consequential loss arising from the use of this report or its contents. This report may not be reproduced, distributed or published by any recipient for any purpose.