

Friday, September 14th, 2018

## DOMESTIC MARKET RECAP

IHSG membukukan *technical rebound*, menguji *critical level* 5845 pada perdagangan Kamis (13/9). Hal ini sejalan dengan maraknya *bargain hunting* pada saham emiten-emiten bank, terutama bank-bank *bluechip* (BBNI [+3.16%]; BMRI [+3/14%]). Selain Sektor Keuangan (+1.77%), Sektor Infrastruktur (+2.05%) juga menjadi mover IHSG. Hal ini sejalan dengan penguatan signifikan TLKM (+2.05%).

Faktor utama yang memicu hal di atas adalah meredanya efek psikologis dari keputusan Lembaga Penjamin Simpanan (LPS) menaikkan suku bunga penjamin simpanan. Sementara faktor eksternal yang menopang penguatan IHSG adalah ekspektasi hasil pertemuan *Bank of England* dan *European Central Bank*. Keduanya diperkirakan mempertahankan kebijakan moneter akomodatifnya pada pertemuan bulan ini (13/9). Hal ini berpotensi meredam penguatan *USD* dalam jangka pendek, sehingga berdampak positif pada nilai tukar Rupiah.

# 5858.27

**Daily** +60.12  
**Change** +1.04%  
**YTD** -7.83%

\*as of 13-9-2018

T. Volume (Shares) 8.39 B  
T. Value (Rp) 6.68 T  
F. Net Value (Rp) -193.67 B  
2018 F. Net Val (Rp) -54.07T  
Market Cap. (Rp) 6,588 T  
2018 Highest 6693.47  
2018 Lowest 5557.56

Source : BEI

## Selective Shares

Source : IDX | Processed

as of 13-9-2018

	Last	% Ch.	% YTD	Recommendation	'18 Low	'18 High	PER	PBV	Entry	Target	Cut Loss
BBRI	3,000	3.09	-17.58	Trading Buy	2,720	3,470	12.37	2.28	3,005	3,070	2,920
HOKI	915	2.23	165.99	Trading Buy	655	1,015	20.35	4.28	925	960	870
INCO	3,450	3.60	19.38	Trading Buy	3,020	4,500	91.13	1.36	3,465	3,610	3,280
TLKM	3,450	3.92	-22.30	Wait and See	3,250	3,670	15.16	2.89	3,460	3,590	3,290
INDF	6,000	-2.04	-21.31	Wait and See	5,925	6,775	12.64	1.13	6,050	6,300	5,700
JSMR	4,550	2.25	-28.91	Wait and See	3,920	5,100	15.40	1.75	4,550	4,740	4,320
UNVR	46,550	0.92	-16.73	Sell on Strength	40,400	46,600	48.28	50.65	46,575	47,250	45,700
PGAS	2,020	-0.98	15.43	Sell on Strength	1,505	2,190	25.25	1.13	2,050	2,120	1,940
LSIP	1,380	-2.47	-2.82	Sell on Strength	905	1,435	20.29	1.13	1,400	1,475	1,305
ELSA	354	1.14	-4.84	Sell on Strength	290	404	9.11	0.83	358	368	342

Compiled by

**Valdy Kurniawan**

Senior Equity Research Analyst  
+62 21 2555 6138 Ext. 8304  
at.research@phintracosekuritas.com

**Rendy Wijaya**

Equity Research Analyst  
+62 21 2555 6138 Ext. 8304  
at.research@phintracosekuritas.com

# Technical Reviews

## Telekomunikasi Indonesia (Persero). Tbk | TLKM



### TECHNICAL Reviews

Bepeluang membentuk konfirmasi *rebound* ke Rp3,500. Konfirmasi *rebound* ini mengindikasikan potensi uji *resistance level* pada Rp3,600. *Resistance breakout* menjadi sinyal kuat *bullish reversal* dengan *target level* di kisaran Rp3,800-Rp3,900. Oleh sebab itu, akumulasi beli sebaiknya dilakukan si atas *critical level* Rp3,500.

# 3,450

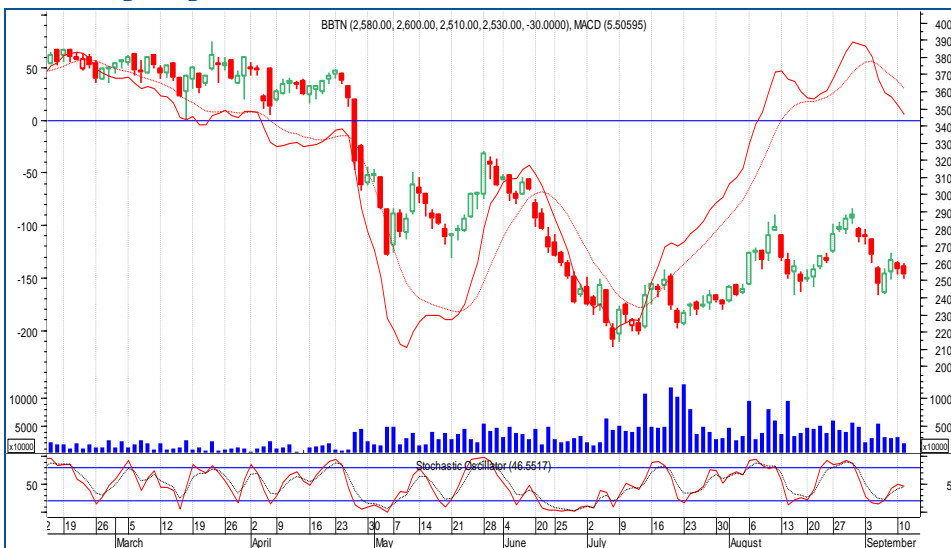
Daily Change **130**  
**3.92%**

**Maintain Buy**

2018 Highest	Rp	4,380
2018 Lowest	Rp	3,250
Critical Area	Rp	3,500
Entry Level	Rp	3,500
Target Price	Rp	3,800
Cut Loss	Rp	3,350
MACD		-65.74
Stochastic		48.78

Source : IDX | Processed

## Bank Tabungan Negara (Persero). Tbk | BBTN



### TECHNICAL Reviews

Selama bertahan di atas Rp2600, cermati potensi penguatan ke *pivot level* Rp2,800. *Breakout* Rp2,800 merupakan sinyal awal *bullish reversal*. *Target level* jangka pendek dari pola *bullish reversal* ini berada di kisaran Rp3,200. Sebaliknya, waspadai *support level* Rp2,400, jika BBTN tertahan di bawah Rp2,600.

# 2,600

Daily Change **70**  
**2.77%**

**Trading Buy**

2018 Highest	Rp	3,890
2018 Lowest	Rp	2,110
Critical Area	Rp	2,600
Entry Level	Rp	2,600
Target Price	Rp	3,200
Cut Loss	Rp	2,400
MACD		5.51
Stochastic		46.55

Source : IDX | Processed



# ECONOMIC Calendar

**Tabel 1. Corporate Action Calendar**

	Type of Corporate Action	Date	Nominal (Rp)	Ratio
HRTA	RUPSLB	14-Sep-18	-	-
HEXA	RUPSLB	18-Sep-18	-	-
CPRO	RUPSLB	19-Sep-18	-	-
CPRO	RUPST	19-Sep-18	-	-
CNTB	RUPST	19-Sep-18	-	-
CNTX	RUPST	19-Sep-18	-	-
CSAP	RUPSLB	20-Sep-18	-	-
BABP	RUPSLB	20-Sep-18	-	-
PSSI	RUPSLB	20-Sep-18	-	-
ITMA	RUPST	20-Sep-18	-	-
MDKA	RUPSLB	21-Sep-18	-	-

Source : KSEI

**Tabel 2. Global Economic Released**

	Date	Forecast	Previous
China Fixed Asset Investment (YoY) (Aug)	14-Sep-18	5.5%	5.5%
China Industrial Production (YoY) (Aug)	14-Sep-18	5.9%	6.0%
Japan Industrial Production (MoM) (Jul)	14-Sep-18	-	-2.2%
Euro Area Trade Balance (Jul)	14-Sep-18	-	-0.1%
US Core Retail Sales (MoM) (Aug)	14-Sep-18	0.5%	0.6%
US Retail Sales (MoM) (Aug)	14-Sep-18	0.4%	0.5%
China Unemployment Rate (Aug)	14-Sep-18	-	5.1%

Source : dailyfx.com

# CONTACT US

## PHINTRACO SEKURITAS

The EAST Tower 16th Floor  
Jl. Dr. Ide Anak Agung Gde Agung Kav. E3.2 No. 1  
Mega Kuningan, Jakarta 12950

CALL CENTER : +62 21 2555 6111

P. +62 21 2555 6138

F. +62 21 2555 6139

[www.phintracosekuritas.com](http://www.phintracosekuritas.com) | [www.profits.co.id](http://www.profits.co.id) | [www.taspro.co.id](http://www.taspro.co.id)

### ACEH

Bursa Efek Indonesia Kantor Perwakilan Aceh  
Jl. Tengku Imeum Leung Bata No. 84  
Blang Cut, Lueng Bata, Kota Banda Aceh, Aceh 23127  
P. 0651 351 03

### RIAU

Bursa Efek Indonesia Kantor Perwakilan Riau  
Jl. Jend. Sudirman No.73, Pekanbaru – Riau  
P. 0761 787 0982

### SEMARANG

Ruko Saka Square A-09  
Jl. Majapahit 71-73  
Semarang 50167, Jawa Tengah  
P. 024 7692 8573

### YOGYAKARTA

Jl. Laksda Adisucipto No. 177  
Yogyakarta 55281, DIY  
P. 0274 446 9385

### MATARAM

Bursa Efek Indonesia Kantor Perwakilan Mataram  
Jl. Pejanggik 47 C  
Mataram, Nusa Tenggara Barat

### BALIKPAPAN

Bursa Efek Indonesia Kantor Perwakilan Balikpapan  
Jl. Jendral Sudirman No. 33-B  
Balikpapan, Kalimantan Timur

### JAYAPURA

Bursa Efek Indonesia Kantor Perwakilan Jayapura  
Ruko Polimak 3 Halte  
Jl. Adipura, Polimak  
Jayapura, Papua

### MEDAN

Uniplaza Building West Tower 1st Floor  
Jl. Letjend M.T. Haryono No. A-1  
Medan 20231, Sumatera Utara  
P. 061 453 0223

### BANDUNG

Jl. Abdul Rivai No. 3B  
Bandung 40171 Jawa Barat  
P. 022 4231 883

### SOLO

Jl. Monginsidi No. 105  
Surakarta 57133, Jawa Tengah  
(Depan Stasiun Solo Balapan)  
P. 0271 293 1850

### SURABAYA

Ruko Icon 21 Blok R-05  
Jl. Dr. Ir. H. Soekarno (MERR)  
Surabaya 60111, Jawa Timur  
P. 031 9900 5231 | 031 9900 5232

### PALANGKA RAYA

Bursa Efek Indonesia Kantor Perwakilan Palangka Raya  
Jl. RTA. Milono Km. 1.5 Ruko 1  
Palangka Raya, Kalimantan Tengah  
P. 0536 4215135

### MANADO

Bursa Efek Indonesia Kantor Perwakilan Manado  
Kompleks Ruko Mega Mas Style, Blok 1C, No. 9  
Jl. Piere Tendean Boulevard  
Manado, Sulawesi Utara  
P. 0431 882 0387

## DISCLAIMER

This report is provided for information purposes only. It is not a complete analysis of every material fact respecting any company, industry, security or investment. Opinions expressed are subject to change without notice. Statements of fact have been obtained from sources considered reliable but no representation is made by Phintraco Sekuritas or any of its affiliates as to their completeness or accuracy. Phintraco Sekuritas in this report, which position may change from time to time, buy or sell such securities or investments. Phintraco Sekuritas or its affiliates may from time to time perform investment banking or other services for, or solicit investment banking or other business from, any company mentioned in this report. An employee of Phintraco Sekuritas or its affiliates may be director of a company mentioned in this report. Neither this report, nor any opinion expressed herein, should be construed as an offer to sell or a solicitation of an offer to acquire any securities or other investments mentioned herein. The company accepts no liability whatsoever for any direct or consequential loss arising from the use of this report or its contents. This report may not be reproduced, distributed or published by any recipient for any purpose.