

Wednesday, October 10th, 2018

DOMESTIC MARKET RECAP

IHSG melanjutkan penguatan pada perdagangan sesi II hari ini (9/10) dan ditutup menguat 0.62% didukung oleh penguatan sektor aneka industri (+2.12%) dan industri dasar (+1.58%). Sementara itu, ditengah berlanjutnya depresiasi nilai tukar Rupiah ke kisaran Rp15,220, sektor keuangan (+1.09%) mencatatkan kinerja positif didukung oleh stimulus dari berlakunya aturan Giro Wajib Minimum (GWM) valas yang dapat meningkatkan likuiditas perbankan dan menjaga pasokan valuta asing pada pasar keuangan domestik. Selain itu, sektor pertambangan (-1.18%) melanjutkan koreksi dan menjadi *laggards* IHSG hari ini (9/10) disebabkan oleh penurunan harga komoditas dunia.

Ditengah melemahnya mayoritas bursa regional seperti *Nikkei* (-1.32%) dan *HSI* (-0.11%), bursa regional *SSEC* Tiongkok (+0.17%) mempertahankan kinerja positif didukung relaksasi aturan reserve ratio perbankan oleh PBOC.

5796.79

Daily 35.72
Change 0.62%
YTD -8.79%

*as of 9-10-2018

T. Volume (Shares) 9.45 B
 T. Value (Rp) 6,043 T
 F. Net Value (Rp) -300.24 B
 2018 F. Net Val (Rp) -54.76 T
 Market Cap. (Rp) 6,537 T
 2018 Highest 6693.47
 2018 Lowest 5661.08

Source : BEI

Selective Shares

Source : IDX | Processed

as of 9-10-2018

	Last	% Ch.	% YTD	Recommendation	'18 Low	'18 High	PER	PBV	Entry	Target	Cut Loss
ADRO	1,730	-1.14	-6.99	Buy on Weakness	1,575	2,030	9.83	0.92	1,750	1,800	1,675
ANTM	810	0.00	29.60	Buy on Weakness	755	955	28.25	1.03	815	840	780
ITMG	25,750	-1.90	24.40	Buy on Weakness	21,000	29,450	9.81	2.25	26,175	27,425	24,275
BBCA	23,750	1.28	8.45	Trading Buy	20,700	25,475	25.38	4.24	23,750	24,225	23,175
ASII	7,025	2.55	-15.36	Trading Buy	6,125	7,600	13.69	1.76	7,025	7,250	6,725
SMGR	9,300	0.00	-6.06	Trading Buy	6,575	9,925	28.40	1.80	9,375	10,000	8,500
PTBA	4,500	-4.05	82.93	Wait and See	3,170	4,940	10.06	4.00	4,590	4,800	4,260
MEDC	920	-6.60	3.37	Wait and See	720	1,095	13.71	0.78	950	1,055	815
AKRA	3,820	0.53	-39.84	Wait and See	3,230	4,420	0.68	1.56	3,850	3,950	3,710
HMSP	3,850	0.26	-18.60	Sell on Strength	3,310	3,950	36.63	16.16	3,850	3,920	3,770

Compiled by

Valdy Kurniawan

Senior Equity Research Analyst

+62 21 2555 6138 Ext. 8304

at.research@phintracosekuritas.com

Rendy Wijaya

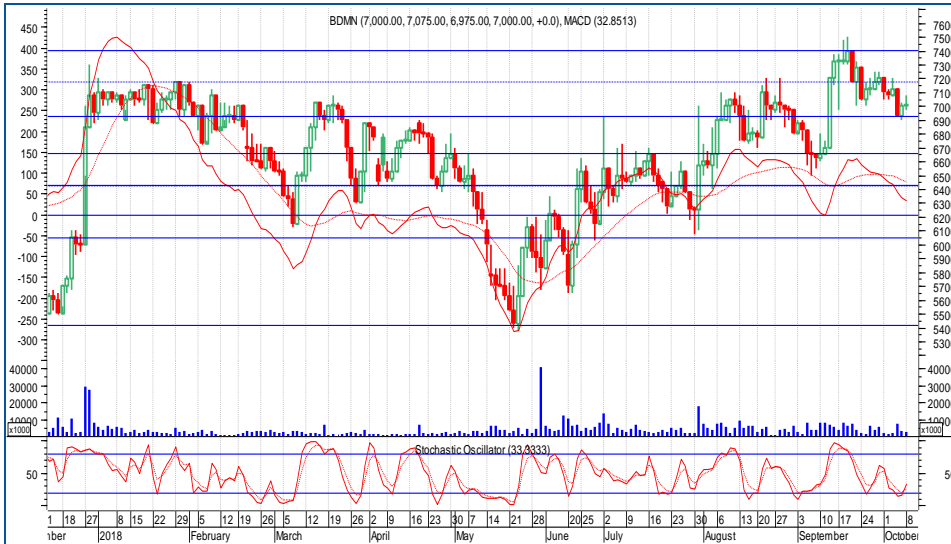
Equity Research Analyst

+62 21 2555 6138 Ext. 8304

at.research@phintracosekuritas.com

Technical Reviews

Bank Danamon Indonesia. Tbk | BDMN



TECHNICAL Reviews

BDMN berpotensi melakukan *technical rebound* menguji *pivot level* di Rp7,200 selama bertahan di atas *support* Rp6,925. Hal ini juga dikonfirmasi oleh *reversal stochastic* dari area *oversold*. Jika penguatan berlanjut, BDMN berpotensi menguji *resistance* di Rp7,400. Sejalan dengan hal ini, investor dapat melakukan *buy on weakness* BDMN dengantarget harga Rp7,550.

7,025

Daily Change **25**
-0.36%

Buy on Weakness

2018 Highest	Rp	7,500
2018 Lowest	Rp	5,375
Critical Area	Rp	6,000
Entry Level	Rp	7,000
Target Price	Rp	7,550
Cut Loss	Rp	6,700
MACD		32.85
Stochastic		33.33

Source : IDX | Processed

Elnusa, Tbk | ELSA



TECHNICAL Reviews

Seiring dengan *profit taking* pada area *resistance* Rp400, ELSA kembali terkoreksi menguji *critical level* pada Rp350. Waspadaai potensi *breakdown pivot level* yang akan menjadi sinyal berlanjutnya *minor bearish reversal* menguji *support* di kisaran Rp306.

384

Daily Change **12**
3.23%

Sell on Strength

2018 Highest	Rp	540
2018 Lowest	Rp	290
Critical Area	Rp	420
Entry Level	Rp	310
Target Price	Rp	380
Cut Loss	Rp	300
MACD		6.75
Stochastic		14.29

Source : IDX | Processed



ECONOMIC Calendar

Tabel 1. Corporate Action Calendar

	Type of Corporate Action	Date	Nominal (Rp)	Ratio
IKBI	Payment Date Cash Dividend	10-Oct-18	5.00	-
IKAI	RUPSLB	10-Oct-18	-	-
MYTX	RUPSLB	12-Oct-18	-	-
DPUM	RUPSLB	12-Oct-18	-	-
MYTX	RUPSLB	12-Oct-18	-	-
DPUM	RUPSLB	12-Oct-18	-	-
GOLL	RUPSLB	16-Oct-18	-	-
ISAT	RUPSLB	17-Oct-18	-	-
AALI	Payment Date Cash Dividend	19-Oct-18	112.00	-
BSSR	Payment Date Cash Dividend	19-Oct-18	151.23	-
HEXA	Payment Date Cash Dividend	19-Oct-18	320.67	-

Source : KSEI

Tabel 2. Global Economic Released

	Date	Forecast	Previous
UK Industrial Production (MoM) (Aug)	10-Oct-18	0.2%	0.1%
UK Manufacturing Production (MoM) (Aug)	10-Oct-18	0.2%	-0.2%
UK Trade Balance (Aug)	10-Oct-18	-11.75B	-9.97B
US Producer Price Index (MoM) (Sep)	10-Oct-18	0.2%	-0.1%
US Core Inflation (MoM) (Sep)	11-Oct-18	0.2%	0.1%
US Inflation (MoM) (Sep)	11-Oct-18	0.2%	0.2%
US Crude Inventories	11-Oct-18	5,082M	7.975M

Source : dailyfx.com

CONTACT US

PHINTRACO SEKURITAS

The EAST Tower 16th Floor
Jl. Dr. Ide Anak Agung Gde Agung Kav. E3.2 No. 1
Mega Kuningan, Jakarta 12950

CALL CENTER : +62 21 2555 6111

P. +62 21 2555 6138

F. +62 21 2555 6139

www.phintracosekuritas.com | www.profits.co.id | www.taspro.co.id

ACEH

Bursa Efek Indonesia Kantor Perwakilan Aceh
Jl. Tengku Imeum Leung Bata No. 84
Blang Cut, Lueng Bata, Kota Banda Aceh, Aceh 23127
P. 0651 351 03

RIAU

Bursa Efek Indonesia Kantor Perwakilan Riau
Jl. Jend. Sudirman No.73, Pekanbaru – Riau
P. 0761 787 0982

SEMARANG

Ruko Saka Square A-09
Jl. Majapahit 71-73
Semarang 50167, Jawa Tengah
P. 024 7692 8573

YOGYAKARTA

Jl. Laksda Adisucipto No. 177
Yogyakarta 55281, DIY
P. 0274 446 9385

MATARAM

Bursa Efek Indonesia Kantor Perwakilan Mataram
Jl. Pejanggik 47 C
Mataram, Nusa Tenggara Barat

BALIKPAPAN

Bursa Efek Indonesia Kantor Perwakilan Balikpapan
Jl. Jendral Sudirman No. 33-B
Balikpapan, Kalimantan Timur

JAYAPURA

Bursa Efek Indonesia Kantor Perwakilan Jayapura
Ruko Polimak 3 Halte
Jl. Adipura, Polimak
Jayapura, Papua

MEDAN

Uniplaza Building West Tower 1st Floor
Jl. Letjend M.T. Haryono No. A-1
Medan 20231, Sumatera Utara
P. 061 453 0223

BANDUNG

Jl. Abdul Rivai No. 3B
Bandung 40171 Jawa Barat
P. 022 4231 883

SOLO

Jl. Monginsidi No. 105
Surakarta 57133, Jawa Tengah
(Depan Stasiun Solo Balapan)
P. 0271 293 1850

SURABAYA

Ruko Icon 21 Blok R-05
Jl. Dr. Ir. H. Soekarno (MERR)
Surabaya 60111, Jawa Timur
P. 031 9900 5231 | 031 9900 5232

PALANGKA RAYA

Bursa Efek Indonesia Kantor Perwakilan Palangka Raya
Jl. RTA. Milono Km. 1.5 Ruko 1
Palangka Raya, Kalimantan Tengah
P. 0536 4215135

MANADO

Bursa Efek Indonesia Kantor Perwakilan Manado
Kompleks Ruko Mega Mas Style, Blok 1C, No. 9
Jl. Piere Tendean Boulevard
Manado, Sulawesi Utara
P. 0431 882 0387

DISCLAIMER

This report is provided for information purposes only. It is not a complete analysis of every material fact respecting any company, industry, security or investment. Opinions expressed are subject to change without notice. Statements of fact have been obtained from sources considered reliable but no representation is made by Phintraco Sekuritas or any of its affiliates as to their completeness or accuracy. Phintraco Sekuritas in this report, which position may change from time to time, buy or sell such securities or investments. Phintraco Sekuritas or its affiliates may from time to time perform investment banking or other services for, or solicit investment banking or other business from, any company mentioned in this report. An employee of Phintraco Sekuritas or its affiliates may be director of a company mentioned in this report. Neither this report, nor any opinion expressed herein, should be construed as an offer to sell or a solicitation of an offer to acquire any securities or other investments mentioned herein. The company accepts no liability whatsoever for any direct or consequential loss arising from the use of this report or its contents. This report may not be reproduced, distributed or published by any recipient for any purpose.