

Friday, November 2nd, 2018

DOMESTIC MARKET RECAP

IHSG berhasil menguat terbatas sebesar 0.07% pada hari ini (1/11) ditopang oleh penguatan sektor keuangan (+1.26%). Apresiasi nilai tukar Rupiah kembali mendekati kisaran Rp15,100 memicu penguatan sektor keuangan pada perdagangan hari ini (1/11). Selain itu, investor asing juga turut mencatatkan *nett buy* dengan nilai yang signifikan mencapai Rp1.17 triliun. Meskipun begitu, rilis data inflasi umum Indonesia Oktober 2018 yang melebihi ekspektasi (3.16% vs 3.03% YoY) menjadi sentimen negatif yang membatasi penguatan IHSG seiring dengan kekhawatiran investor terhadap perlambatan pertumbuhan konsumsi kedepan.

Sejalan dengan kinerja IHSG hari ini (1/11), bursa regional SSECTiongkok (+0.13%) mencatatkan penguatan terbatas. Penguatan ini dibayangi oleh potensi perlambatan ekonomi Tiongkok seiring dengan penurunan *Manufacturing PMI* Tiongkok Oktober 2018 (50.2 vs 50.8 MoM).

5835.92

Daily 4.27
Change 0.07%
YTD -8.18%

*as of 1-11-2018

T. Volume (Shares)	9.55 B
T. Value (Rp)	8.55 T
F. Net Value (Rp)	1.17 T
2018 F. Net Val (Rp)	-53.41 T
Market Cap. (Rp)	6,599 T
2018 Highest	6693.47
2018 Lowest	5661.08

Source : BEI

Selective Shares

Source : IDX | Processed

as of 1-11-2018

	Last	% Ch.	% YTD	Recommendation	'18 Low	'18 High	PER	PBV	Entry	Target	Cut Loss
BRPT	1,870	-0.27	-17.26	Maintain Buy	1,510	2,030	27.73	0.87	1,880	2,000	1,730
BBTN	2,240	5.66	-37.25	Buy on Weakness	2,010	2,920	8.25	1.05	2,250	2,380	2,080
WIKA	1,165	5.91	-24.84	Buy on Weakness	1,095	1,735	10.10	0.70	1,170	1,280	1,035
GGRM	72,300	0.00	-13.72	Trading Buy	66,500	80,250	19.57	3.41	72,800	74,775	69,975
SSMS	1,290	2.38	-14.00	Trading Buy	1,005	1,365	18.91	2.86	1,290	1,330	1,240
ITMG	24,800	-0.40	19.81	Trading Buy	21,000	29,450	9.45	2.16	24,975	25,425	24,300
UNVR	42,200	-2.37	-24.51	Wait and See	40,400	47,225	43.61	64.25	42,875	44,725	40,075
BMRI	7,225	5.47	-9.69	Sell on Strength	6,175	7,425	13.70	1.96	7,300	7,900	6,475
INDF	5,925	-0.84	-22.30	Sell on Strength	5,500	6,775	13.30	1.10	5,975	6,275	5,525
KLBF	1,340	-2.19	-20.71	Sell on Strength	1,155	1,395	25.83	4.50	1,355	1,425	1,260

Compiled by

Valdy Kurniawan

Senior Equity Research Analyst

+62 21 2555 6138 Ext. 8304

at.research@phintracosekuritas.com

Rendy Wijaya

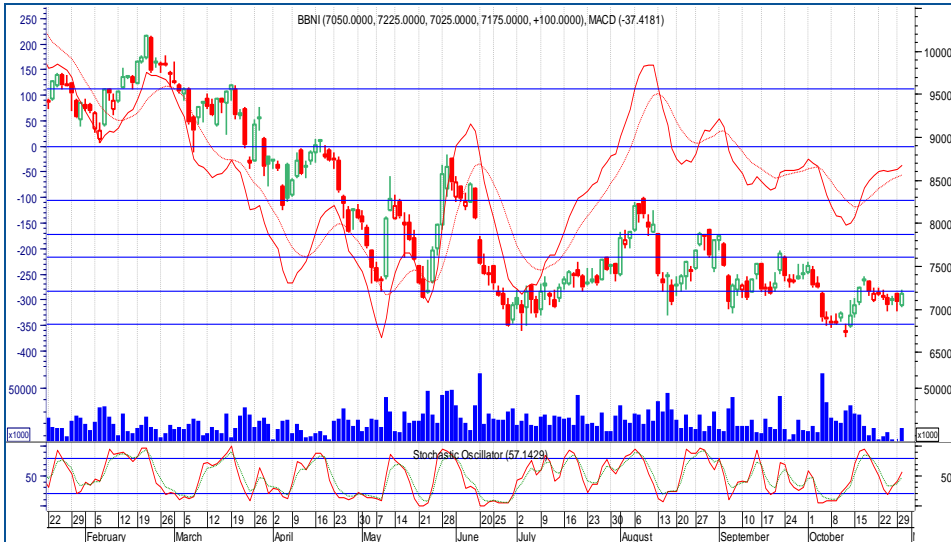
Equity Research Analyst

+62 21 2555 6138 Ext. 8304

at.research@phintracosekuritas.com

Technical Reviews

Bank Negara Indonesia (Persero). Tbk | BBNi



TECHNICAL Reviews

Kembali berada di bawah *pivot level* Rp7,200, BBNi diperkirakan akan melemah kembali menguji *support* Rp6,825. Apabila bertahan di atas *support* tersebut, BBNi berpotensi mencatatkan *technical rebound* ke kisaran Rp7,600. Sejalan dengan itu, investor dapat *wati and seem* mencermati sinyal *minor bullish reversal* BBNi dari area *support*.

7,400

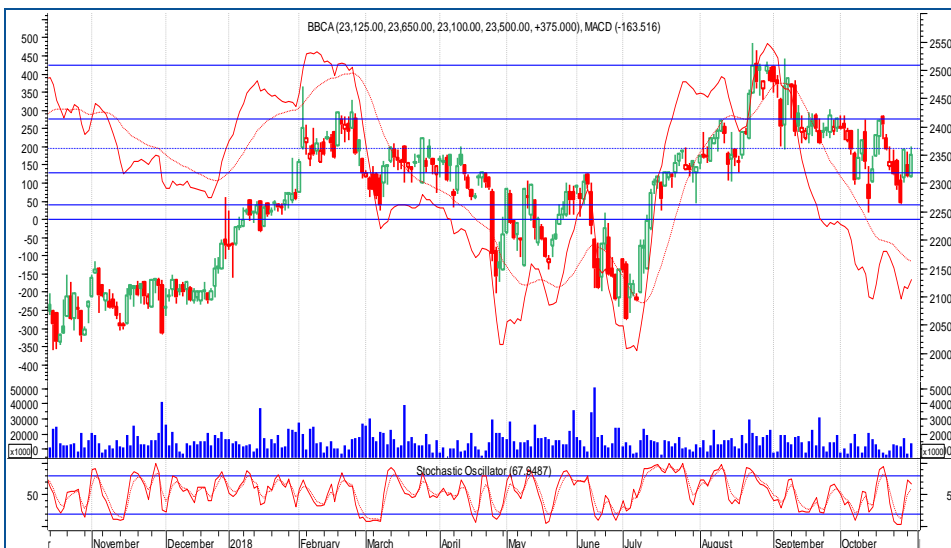
Daily Change **100**
1.37%

Wait and See

2018 Highest	Rp	10,175
2018 Lowest	Rp	6,675
Critical Area	Rp	8,275
Entry Level	Rp	6,900
Target Price	Rp	7,600
Cut Loss	Rp	6,500
MACD		-37.42
Stochastic		57.14

Source : IDX | Processed

Bank Central Asia, Tbk | BBCA



TECHNICAL Reviews

Waspadaai potensi *breakdown support* Rp23,200 seiring dengan *stochastic indicator* yang mendekati area *overbought*. *Breakdown support* akan menjadi sinyal awal *bearish continuation* ke kisaran Rp22,500. Sejalan dengan itu, investor dapat *wati and seem* nanti sinyal *minor bullish reversal* BBCA.

23,800

Daily Change **150**
0.63%

Wait and See

2018 Highest	Rp	25,475
2018 Lowest	Rp	21,425
Critical Area	Rp	22,000
Entry Level	Rp	22,800
Target Price	Rp	24,200
Cut Loss	Rp	21,500
MACD		-163.52
Stochastic		67.95

Source : IDX | Processed



ECONOMIC Calendar

Tabel 1. Corporate Action Calendar

	Type of Corporate Action	Date	Nominal (Rp)	Ratio
BMSR	RUPSLB	5-Nov-18	-	-
BMSR	RUPSLB	5-Nov-18	-	-
GMFI	RUPSLB	6-Nov-18	-	-
SRAJ	RUPSLB	6-Nov-18	-	-
GMFI	RUPSLB	6-Nov-18	-	-
SRAJ	RUPSLB	6-Nov-18	-	-
CLEO	RUPSLB	7-Nov-18	-	-
BIMA	RUPSLB	7-Nov-18	-	-
CLEO	RUPSLB	7-Nov-18	-	-
BIMA	RUPSLB	7-Nov-18	-	-
NRCA	RUPSLB	9-Nov-18	-	-

Source : KSEI

Tabel 2. Global Economic Released

	Date	Forecast	Previous
UK Construction PMI (Oct)	2-Nov-18	52.5	52.1
US Change in Non-farm Payroll (Oct)	2-Nov-18	189K	134K
US Trade Balance (Sep)	2-Nov-18	-52.40B	-53.20B
US Average Hourly Earnings (YoY) (Oct)	2-Nov-18	2.9%	2.8%
US Unemployment Rate (Oct)	2-Nov-18	3.7%	3.7%
US Factory Orders (MoM) (Sep)	2-Nov-18	-0.8%	2.3%
Indonesia GDP (YoY) (3Q-18)	5-Nov-18	5.16%	5.27%

Source : dailyfx.com

CONTACT US

PHINTRACO SEKURITAS

The EAST Tower 16th Floor
Jl. Dr. Ide Anak Agung Gde Agung Kav. E3.2 No. 1
Mega Kuningan, Jakarta 12950

CALL CENTER : +62 21 2555 6111

P. +62 21 2555 6138

F. +62 21 2555 6139

www.phintracosekuritas.com | www.profits.co.id | www.taspro.co.id

ACEH

Bursa Efek Indonesia Kantor Perwakilan Aceh
Jl. Tengku Imeum Leung Bata No. 84
Blang Cut, Lueng Bata, Kota Banda Aceh, Aceh 23127
P. 0651 351 03

RIAU

Bursa Efek Indonesia Kantor Perwakilan Riau
Jl. Jend. Sudirman No.73, Pekanbaru – Riau
P. 0761 787 0982

SEMARANG

Ruko Saka Square A-09
Jl. Majapahit 71-73
Semarang 50167, Jawa Tengah
P. 024 7692 8573

YOGYAKARTA

Jl. Laksda Adisucipto No. 177
Yogyakarta 55281, DIY
P. 0274 446 9385

MATARAM

Bursa Efek Indonesia Kantor Perwakilan Mataram
Jl. Pejanggik 47 C
Mataram, Nusa Tenggara Barat

BALIKPAPAN

Bursa Efek Indonesia Kantor Perwakilan Balikpapan
Jl. Jendral Sudirman No. 33-B
Balikpapan, Kalimantan Timur

JAYAPURA

Bursa Efek Indonesia Kantor Perwakilan Jayapura
Ruko Polimak 3 Halte
Jl. Adipura, Polimak
Jayapura, Papua

MEDAN

Uniplaza Building West Tower 1st Floor
Jl. Letjend M.T. Haryono No. A-1
Medan 20231, Sumatera Utara
P. 061 453 0223

BANDUNG

Jl. Abdul Rivai No. 3B
Bandung 40171 Jawa Barat
P. 022 4231 883

SOLO

Jl. Monginsidi No. 105
Surakarta 57133, Jawa Tengah
(Depan Stasiun Solo Balapan)
P. 0271 293 1850

SURABAYA

Ruko Icon 21 Blok R-05
Jl. Dr. Ir. H. Soekarno (MERR)
Surabaya 60111, Jawa Timur
P. 031 9900 5231 | 031 9900 5232

PALANGKA RAYA

Bursa Efek Indonesia Kantor Perwakilan Palangka Raya
Jl. RTA. Milono Km. 1.5 Ruko 1
Palangka Raya, Kalimantan Tengah
P. 0536 4215135

MANADO

Bursa Efek Indonesia Kantor Perwakilan Manado
Kompleks Ruko Mega Mas Style, Blok 1C, No. 9
Jl. Piere Tendean Boulevard
Manado, Sulawesi Utara
P. 0431 882 0387

DISCLAIMER

This report is provided for information purposes only. It is not a complete analysis of every material fact respecting any company, industry, security or investment. Opinions expressed are subject to change without notice. Statements of fact have been obtained from sources considered reliable but no representation is made by Phintraco Sekuritas or any of its affiliates as to their completeness or accuracy. Phintraco Sekuritas in this report, which position may change from time to time, buy or sell such securities or investments. Phintraco Sekuritas or its affiliates may from time to time perform investment banking or other services for, or solicit investment banking or other business from, any company mentioned in this report. An employee of Phintraco Sekuritas or its affiliates may be director of a company mentioned in this report. Neither this report, nor any opinion expressed herein, should be construed as an offer to sell or a solicitation of an offer to acquire any securities or other investments mentioned herein. The company accepts no liability whatsoever for any direct or consequential loss arising from the use of this report or its contents. This report may not be reproduced, distributed or published by any recipient for any purpose.